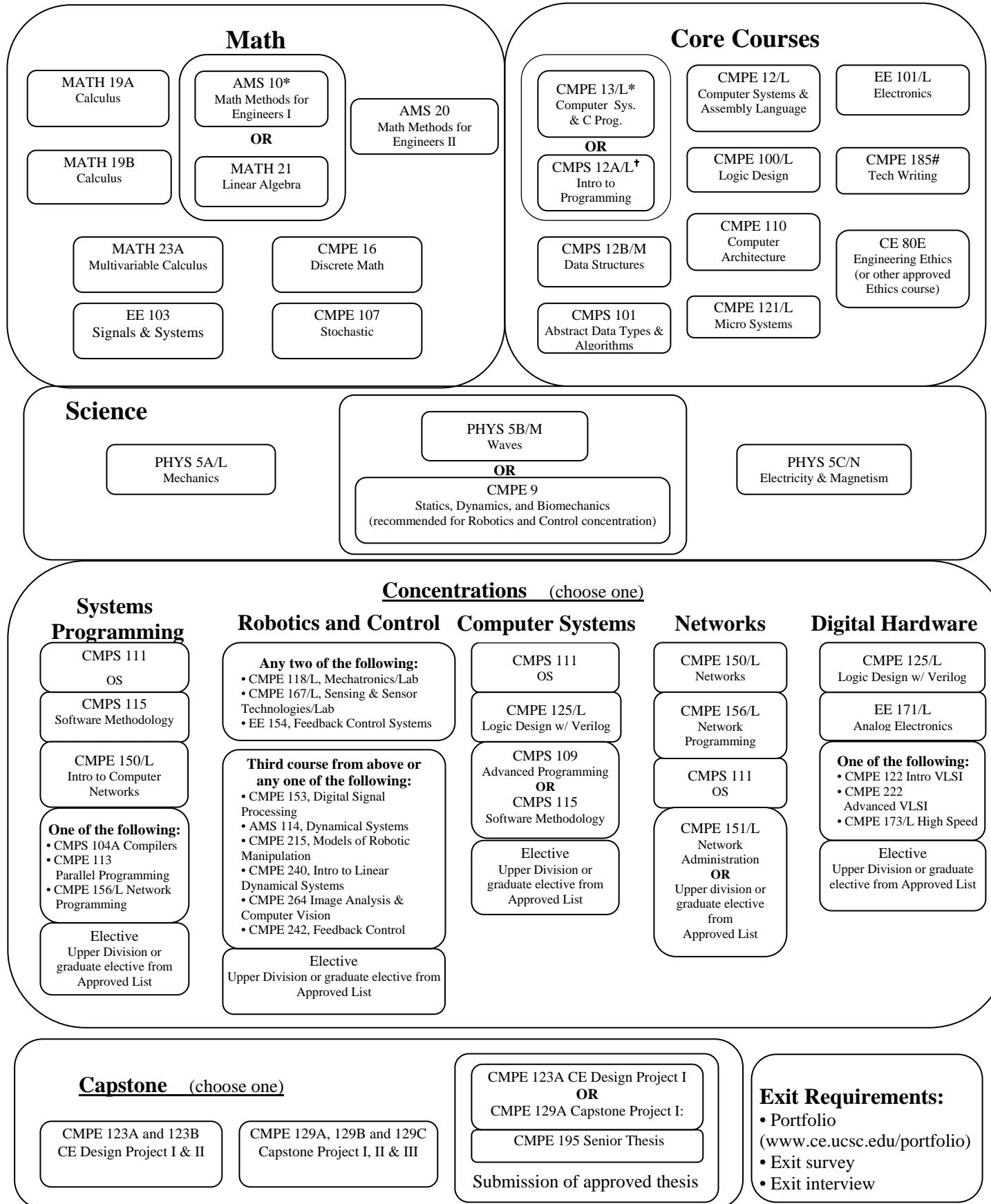


Computer Engineering BS Degree Curriculum Chart 2012-2013



* Preferred
† May substitute with CMPS 5J AND CMPS 11
Satisfies the DC requirement

**COMPUTER ENGINEERING BS
DEGREE CURRICULUM**

Fall _____	Winter _____	Spring _____	Summer _____

Fall _____	Winter _____	Spring _____	Summer _____

Fall _____	Winter _____	Spring _____	Summer _____

Fall _____	Winter _____	Spring _____	Summer _____

Approved List of Upper Division Electives

- | | | |
|--|---|--|
| AMS 147 Computational Methods and Applications
CMPE 108 Data Compression
CMPE 112 Computer and Game Console Architecture
CMPE 113 Parallel Programming
CMPE 118/L Intro to Mechatronics
CMPE 125/L Logic Design with Verilog
CMPE 131 Human-Computer Interaction
CMPE 150/L Intro. to Computer Networks
CMPE 151 Network Administration
CMPE 156/L Network Programming
CMPE 167/L Sensor and Sensor Technologies
CMPE 173/L High Speed Digital Design
CMPE 177 Applied graph Theory/Algor.
CMPS 102 Analysis of Algorithms
CMPS 104A Compiler Design I
CMPS 104B Compiler Design II | CMPS 109 Advanced Programming
CMPS 111 Operating Systems
CMPS 112 Comparative Prog. Langs.
CMPS 115 Software Methodology
CMPS 116 Software Design Project
CMPS 122 Computer Security
CMPS 129 Data Storage Systems
CMPS 130 Computational Models
CMPS 132 Computability and Complexity
CMPS 140 Artificial Intelligence
CMPS 142 Machine Learning and Data Mining
CMPS 146 Game AI
CMPS 160/L Computer Graphics
CMPS 161/L Visualization & Computer Animation
CMPS 164/L Game Engines and Game Engines Lab
CMPS 180 Database Systems | CMPS 181 Database Systems II
CMPS 183 Hypermedia and the Web
CMPS 190X Methods of Cryptography
EE 130/L Optoelectronics & Photonics
EE 135/L Electro. Fields and Waves
EE 136 Engr. Electromagnetics
EE 145/L Properties of Materials
EE 151 Communications Systems
EE 152 Introduction to Wireless Communications
EE 153 Signal Processing
EE 154 Feedback Control Systems
EE 171/L Analog Electronics
EE 172 Advanced Analog Circuits
EE 175/L Energy Generation and Control
TIM 206 Optimization Theory and Appl. |
|--|---|--|

Or Any 5-Credit CS, CE, or EE Graduate Course: At most, one elective may be substituted by an upper-division individual or field study (CMPE, CMPS, EE 193 or 198) with approval.

Approved List of Ethics Courses: CMPE 80E Engineering Ethics; PHIL 22 Intro to Ethical Theory: Contemporary Moral Issues; PHIL 24 Intro to Contemporary Ethics; PHIL 28 Environmental Ethics; BME 80G/PHIL80G/CHEM80G Bioethics in the 21st Century: Science, Business, and Society.

I have discussed the BS/MS program with my advisor.

STUDENT'S NAME: _____ **FACULTY ADVISOR:** _____

STAFF ADVISOR: _____

Watch for CEFULS: CE Faculty-Undergraduate Lunches, regularly scheduled throughout the year, CE's free lunch program